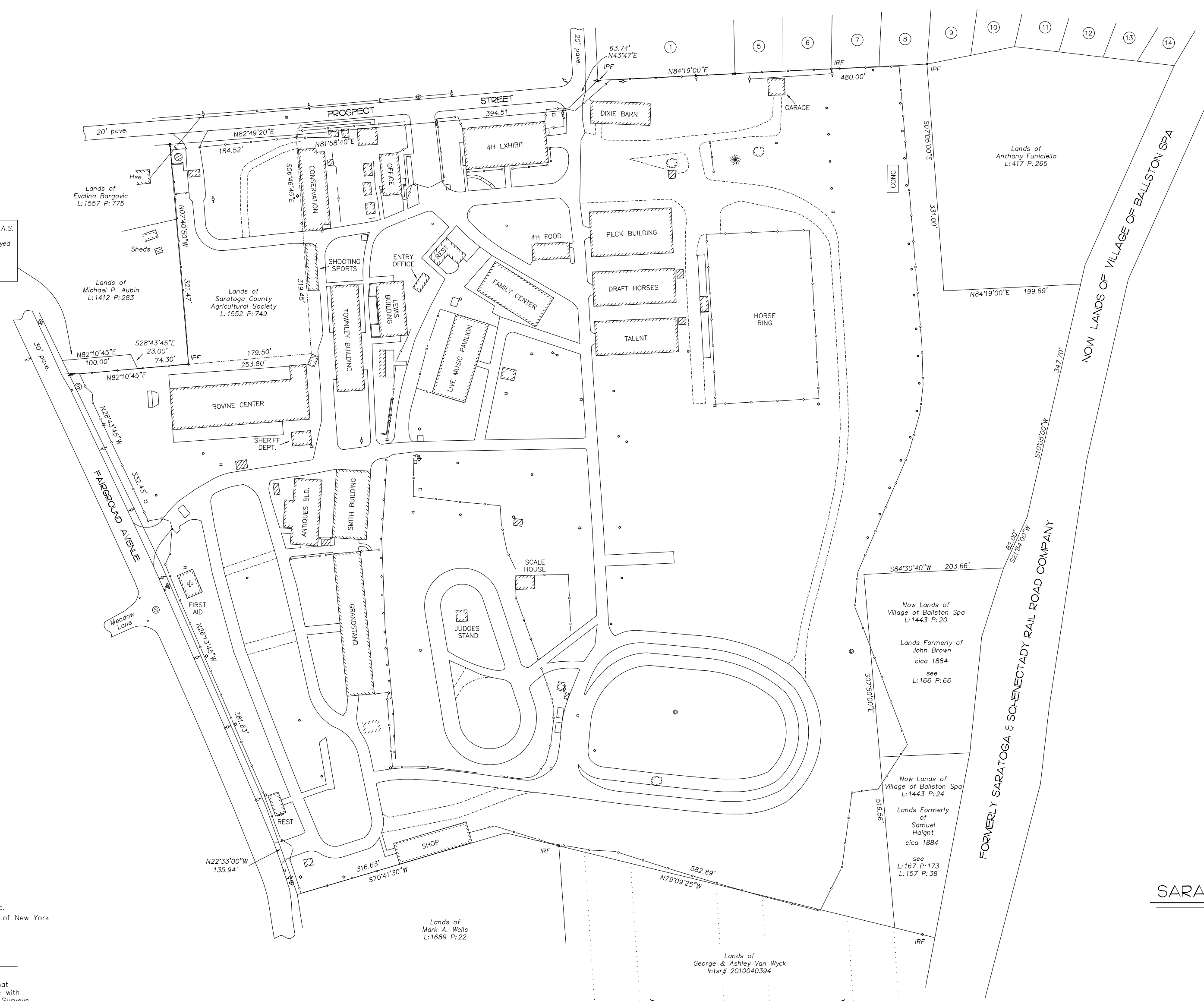




"Prospect Heights" dated October 1957 by A.G. Stine recorded in the Saratoga County Clerk's as map FF-3

- Key:
- = fire hydrant
  - = utility pole
  - = page wire fence
  - = wooden fence
  - = chain link fence
  - IRS = iron rod set
  - IRF = iron rod found
  - IPF = iron pipe found
  - L:157 P:38 = Deed Liber & Page
  - S.C.A.S. = Saratoga County Agricultural Society, Inc.
  - = light pole
  - = water/elec. tap

This 23'x100' strip was conveyed to S.C.A.S. by Wendell Townley on August 1930 Liber 362 page 523. It was also conveyed to Michael Aubin by Emily Burnham on July 1987, Liber 1209 page 124. It is assessed to S.C.A.S. and occupied by Aubin.



Subject Deeds:

William S. Waterbury to The Saratoga County Agricultural Society by deed dated 27 August 1889 and recorded in the Saratoga County Clerk's office in deed book 186 page 297.

Tax Id. 216.23-1-3.1

May S. Kingsbury to Saratoga County Agricultural Society by deed dated 15 June 2000 and recorded in the Saratoga County Clerk's office in deed book 1552 page 749.

Tax Id. 216.23-1-2

Map References:

Refer to a map entitled "Map of a Survey for Saratoga County Agricultural Society, Inc." dated 26 October 1993, last updated 5 June 2005 by Terry L. Humiston, Surveyor.

TOTAL AREA  
29.056 ACRES

SURVEY FOR  
SARATOGA COUNTY AGRICULTURAL SOCIETY, INC.

— situate in —  
VILLAGE OF BALLSTON SPA  
TOWN OF MILTON SARATOGA CO., N.Y.  
SCALE 1"=80' 16 APRIL 2012

I hereby certify to:  
Saratoga County Agricultural Society, Inc.  
First American Title Insurance Company of New York  
The Adirondack Trust Company,  
its successors and assigns.

*Terry L. Humiston*  
Terry L. Humiston LS 49472

Certifications indicated hereon signify that this survey was prepared in accordance with the existing Code of Practice for Land Surveys adopted by the New York State Association of Professional Land Surveyors. Unauthorized alteration or addition to this map is a violation of Article 145, section 7209, sub-paragraph (2) of the New York State Education Law.

Lands of George & Ashley Van Wyck  
Intr# 2010040394

paper streets  
see Filed Map GG-71